

ManageEngine Desktop Central is a Web-Based windows desktop management software that helps administrators to effectively manage the desktops from a central point. It provides Configurations, Inventory Management, Patch Management, Service Pack Installation, Software Installation, Desktop Sharing, System Tools, Active Directory Reports and User Logon Reports. It leverages Windows Active Directory and GPO of Windows 2000 / 2003 Domains to manage Windows Desktops.

Windows Configurations

- Managing Shortcuts
- File Management
- Permission Management
- Redirecting Folders
- Managing Outlook Profiles
- Manage Windows Firewall
- Power Management
- Add or Remove Printers
- Registry Management
- Managing Scheduled Tasks and Services
- Securing Windows Desktop & More

Inventory Management

- Software: License Management, License Compliance, & Software Metering
- Hardware: Hardware Manufacturers, Hardware Types, Hardware Installation per User
- Scheduled Scanning of Windows Systems for Inventory
- View Prohibited Software detected in the Network
- Out-of-the-Box Reports on Hardware and Software Inventory
- Email Alert Notifications

Patch Management

- Automated Patch Management
- Scheduled Vulnerability Scanning
- Patch based deployment
- System based patch deployment
- Automatic handling of patch independencies and patch sequencing
- Generates status reports of patch deployment
- Reboot the computers after installing patches

Easy Desktop Management

Provides out-of-the-box configuration option to address the road-time needs.

Minimal Windows Expertise Needed

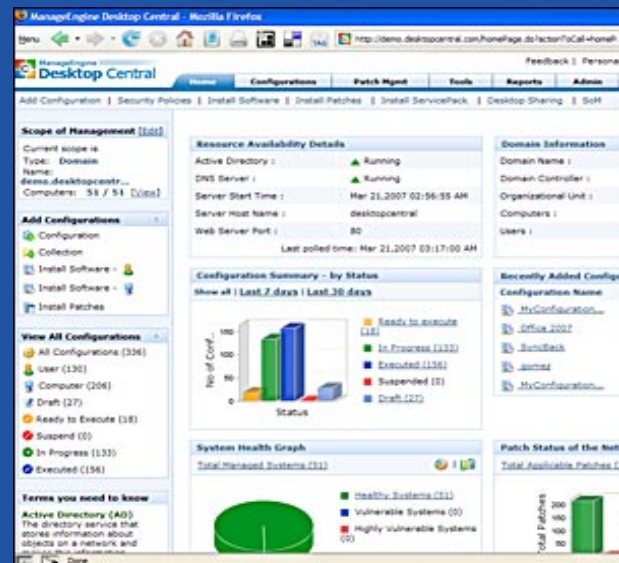
No in-depth knowledge of Windows, Domain, Active Directory, GPO technologies needed to use this tool.

Reduces Manual Intervention

Provides complete visibility of the desktop configurations along with their status.

Access from Anywhere

The Web-based solution can be accessed from anywhere in the network.



Software Installation

- Install MSI & EXE Packages
- Ability to include/exclude desktops using Filter Criteria
- View the status of the software installation
- Uninstall MSI & EXE packages

Service Pack Installation

- Install OS and Application Service Packs
- Option to suspend or resume Service Pack Installation
- View the status of the Service Pack Installation

Desktop Sharing

- Web Browser based Desktop Sharing.
- Supports multiple simultaneous connections to different desktops.
- No individual authentication is required.
- HIPAA compliant - Gets Users' authorization prior to connecting.
- Configurable Screen Resolution

User Logon Reports

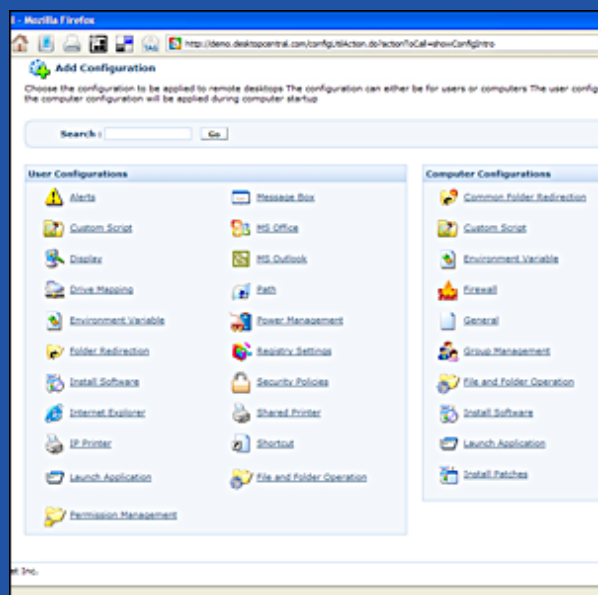
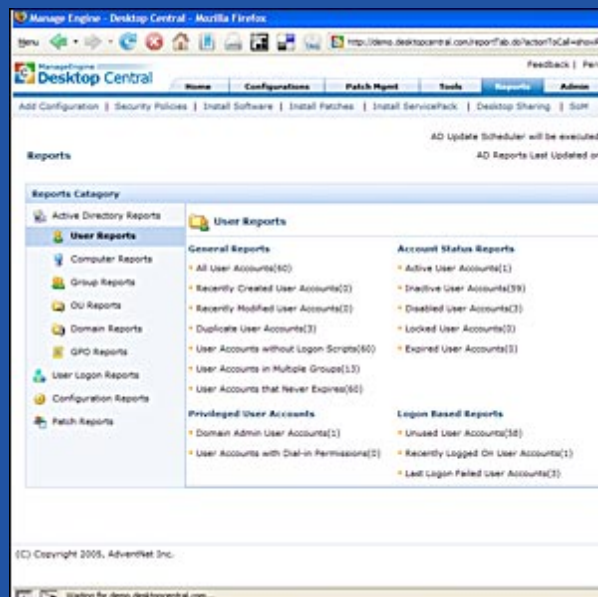
- Up-to-date User Logon details
- Maintain a history of Logon details
- Detailed information like Logon / logoff time, Logon server, etc.
- Over 10 out-of-the-box logon reports

Active Directory Reports

- Complete insight into the Active Directory Infrastructure
- Over 100 out-of-the-box reports
- Scheduled Reports Generation
- Export the report as HTML and CSV

Windows System Tools

- Tools like Disk Defragmenter, Check Disk, and Disk Cleanup.
- Schedule System Tools to run on multiple systems
- Provides detailed logs for troubleshooting
- Reboot the computers after running the tools



System requirements: Pentium IV, 1.5 GHz, 512 MB RAM,
300 MB Hard disk space.

OS supported : Windows 2000 / XP / 2003 / Vista

Web Site: <http://www.desktopcentral.com>

Technical Support : support@desktopcentral.com

Toll Free : +1 925 924 9500

AdventNet Inc, 5200 Franklin Dr, Suite 115,
Pleasanton, CA 94588, USA.