

What can NetFlow Analyzer tell you?

1 Capacity Planning

- ◇ If your bandwidth is being utilized effectively
- ◇ Protocols, hosts, and applications that are using up bandwidth

2 Troubleshooting

- ◇ If a virus has been identified on your network, which links and hosts
- ◇ Real-time identification and monitoring of unwanted traffic

3 Traffic Analysis

- ◇ The who, what, when, where, how of bandwidth usage
- ◇ Traffic trends and peak-time usage patterns

INDepth Traffic Analysis Using NetFlow™

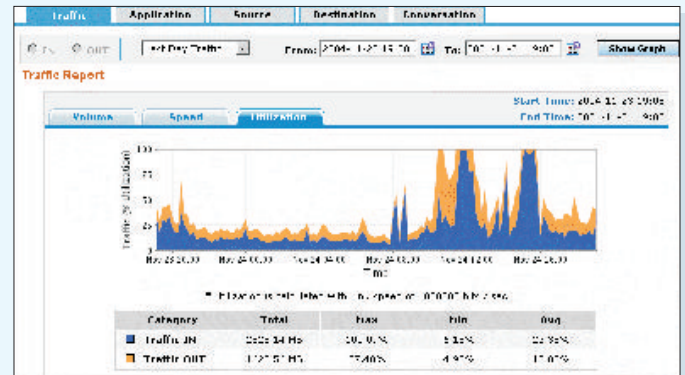
ManageEngine NetFlow Analyzer is a web-based traffic analysis tool that helps network managers to understand how bandwidth is being used up in their network. Leveraging the level of granularity provided by Cisco® NetFlow, NetFlow Analyzer lets you see what applications are using bandwidth, who is using bandwidth, and when.

Performance problems on the network do not always warrant an increase in bandwidth. When a link becomes slow, you want to find out what's causing the bottleneck, which hosts are eating up resources, and for how long the link has been slow. Without fine-grained information on the traffic that is flowing in and out of your network, you may never find out the root cause of such problems. You will simply re-route traffic through another link, or request for more bandwidth.

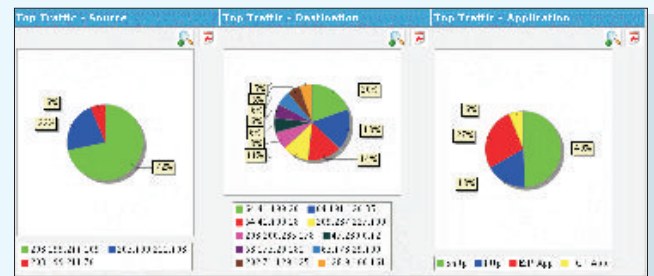
- ▶ How can you determine what's wrong before users start complaining?
- ▶ Where will you search to find the culprit who's hogging bandwidth?
- ▶ How will you decide if you need more bandwidth?

NetFlow Analyzer helps you answer these questions and more. With instant reports on every host, application, and conversation across your network, troubleshooting is a lot easier, and takes far less time. Traffic graphs over varying time periods show you bandwidth usage trends, and traffic patterns across hosts, applications, and conversations.

Informative pie charts show you at one glance, what percentage of the total bandwidth is used up by each source, destination, and application. Such information ensures accurate choices for the entire enterprise regarding capacity planning, network auditing, and traffic management.



NetFlow Analyzer's traffic graphs show bandwidth details for different time periods, based on volume, rate, and percentage utilization of the link.



Pie charts show exactly what percentage of the total bandwidth was used up by each source, destination, and application.

NetFlow Analyzer Features

- ◇ Measure traffic by rate, volume, and utilization, by protocol, host, and conversation
- ◇ Real-time reports for every interface on the network
- ◇ Identify custom applications using a combination of ports and protocols
- ◇ Customize time periods to observe workday reporting
- ◇ View reports across subnets and IP address ranges
- ◇ Categorize links into different groups and selectively allow access

Standard Reports

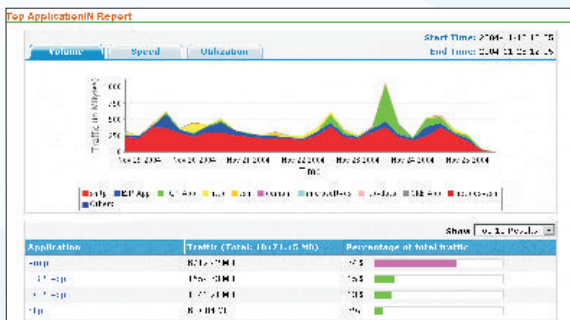
- ◇ Host-wise and application-wise bandwidth usage reports
- ◇ Interface-wise reports with consolidated traffic details
- ◇ Traffic rate, utilization, and volume for applications, hosts, and conversations
- ◇ Historical reports with daily, weekly, monthly, and quarterly traffic utilization graphs

Custom Reports

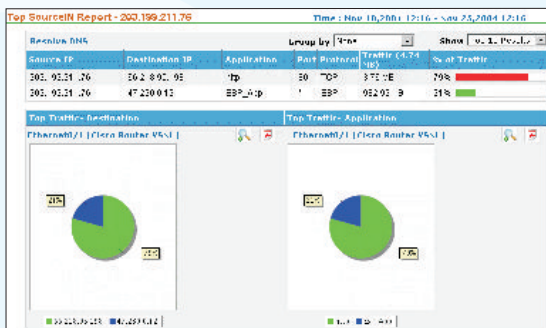
Custom reports allow you to fine tune traffic details, and view only the data that you want to see.

For instance, you can create reports based on:

- ◇ Specific time periods
- ◇ Specific network, or range of IP addresses
- ◇ Specific application, host, or conversation
- ◇ Incoming and/or outgoing traffic



Application reports include distribution of traffic application-wise, with traffic statistics that tell you the percentage of total traffic contributed by each application



Drill down reports to see bandwidth utilization details for a particular source or destination host

Simplified Management

- ◇ **Traffic Configuration:** Identify most enterprise applications out-of-the-box, and add custom applications
- ◇ **Device Management:** Categorize routers into logical groups, and monitor them exclusively
- ◇ **User Management:** Manage users with different access levels, and assign device groups to each.
- ◇ **Web Interface:** Anytime, anywhere access using just a web browser
- ◇ **Platform Interoperability:** Runs on Windows, Linux, and Solaris platforms*

* Select versions only

For more information

Website : www.netflowanalyzer.com

Email : support@netflowanalyzer.com

Toll free: + 1 888 720 9500



AdventNet provides affordable software for management and provisioning of complex networks, systems, and IT applications. With a broad product portfolio and an active customer base ranging from enterprises, equipment vendors, and service providers, AdventNet has emerged as a very affordable and high quality alternative to expensive software that is common in this industry.

AdventNet is headquartered in Pleasanton, CA with offices in NJ, MA, India, UK, China, and Japan and has a well-trained partner base around the globe.

AdventNet, Inc. 5645, Gibraltar Drive, Pleasanton, CA 94588, USA

Website: www.adventnet.com | Email: sales@adventnet.com | Phone: + 1 925 924 9500