

Comprehensive Troubleshooting Tools for IT Administrators

Network and system engineers face the challenge of ensuring high performance and availability of IT resources - servers, routers, switches, servers, applications, and infrastructures. They have to constantly keep an eye on these IT resources and troubleshoot any problems that may occur quickly.

AdventNet introduces the ManageEngine OpUtils - an affordable, ready to use realtime monitoring toolset geared towards helping engineers efficiently monitor, diagnose and troubleshoot IT resources. It consists of 45 plus tools including: network diagnostics, address monitoring, desktop monitoring, network monitoring, cisco and SNMP tools. It also provides an option to create custom SNMP tools to monitor any MIB nodes. OpUtils complements existing management tools by providing troubleshooting and real-time monitoring capabilities. It is a Web-based, cross-platform tool, which runs on Windows and Linux.

The toolset can be used to troubleshoot the frequent network problems such as network connectivity, availability, performance, health, and latency of any IP node in the network. It provides desktop details like CPU, Disk space information, installed software, process information and other vital metrics. Readymade tools to manage DNS names, IP and MAC addresses are also available. SNMP tools are included to help monitor any SNMP-enabled IP node. Graphs, charts, and tables offer real-time views of the network and system information. Results can be exported as reports in various formats like PDF and HTML.

Business Benefits

- Competitive pricing – Starts at **\$195**
- Out-of-the-box tools for real-time needs
- Quick and Easy installation, Ready for use
- Web-based, Easy-to-use and Intuitive: no training necessary

OpUtils Products Suite

The different sets of monitoring tools available in this product are:

Diagnostic Tools

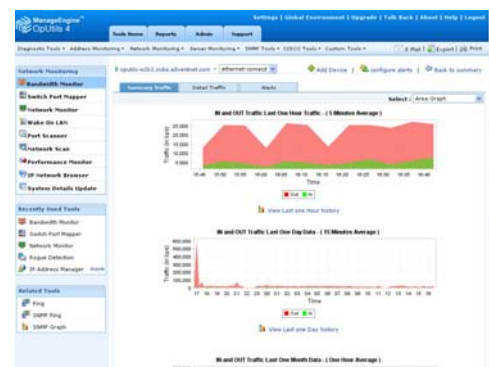
- Useful for the day-to-day management of the Network
- Useful in troubleshooting the connectivity and availability issues in a LAN environment
- Standard tools such as Ping and Trace Route
- Ping a single IP or a range of IP's
- Check whether an IP or a range of IP's are SNMP enabled

Address Monitoring Tools

- Tools that can help in monitoring and managing IP Addresses, MAC Addresses, and DNS Names
- Validate the forward and reverse lookup of a DNS name
- Map the IP Address of a node with its MAC Address and vice versa
- Collect Network data such as subnet, network mask, network type, etc., for the given IP Address
- Retrieve the list of subnets in a network using the given subnet masks
- Identify the IP Addresses that are in use and that are free
- Monitor the DHCP Scopes to identify the used and available IP Addresses in each scope.
- Identify the rogue devices in the network.

Desktop Monitoring Tools

- Tools to monitor desktop information ranging from system configuration, and resource usage to software listing
- Retrieves and plots graphs for information such as disk space and CPU usage
- Lists the installed software and the running processes of a given system
- Lists the OS, addresses, machine configuration, protocols (ICMP, IP, TCP, and UDP), interface statistics, etc., for a device
- Tool to view the TCP connections established in the device and reset the unwanted/unauthorized connections.



Network Monitoring Tools

- Tools that monitors the performance, bandwidth, and traffic statistics of Routers, Switches, and such devices
- Provides graphical views of the monitored statistics
- Traffic trends for-
 - Interface traffic and utilization
 - Interface Packets and Volumes
 - Interface response time
- Display the devices connected to the ports of a Switch with an ability to map multiple switches simultaneously.
- Monitor the IPs in a network and generate alert based on response time
- Wake up a machine in a network from remote
- View and update the system details, such as Name, Location, and Description of the network devices.

Features

- Web-based software enables access from anywhere.
- Support for multi-user accounts.
- Integrated set of over 45 tools.
- Provides network reports such as Inventory, SNMP Devices, Rouge Systems, Available IPs, MAC Address Report, etc.
- Supports email-based notifications
- Can be run as a Windows service
- Exports the results in HTML and PDF formats

SNMP Tools

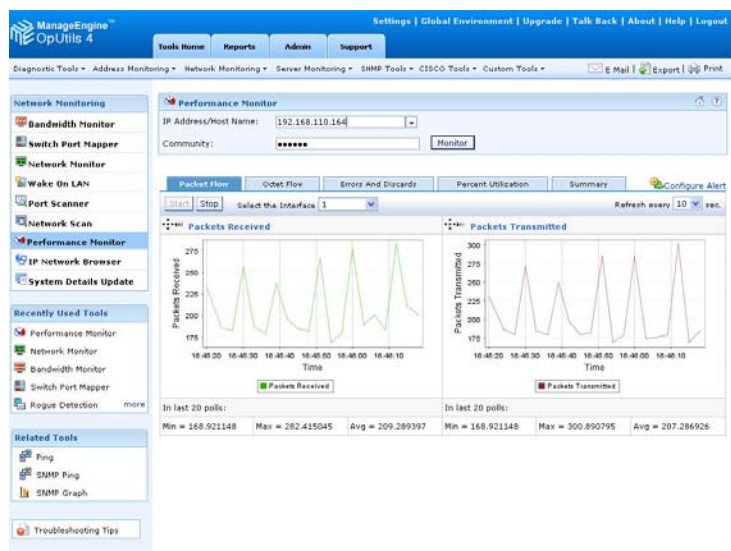
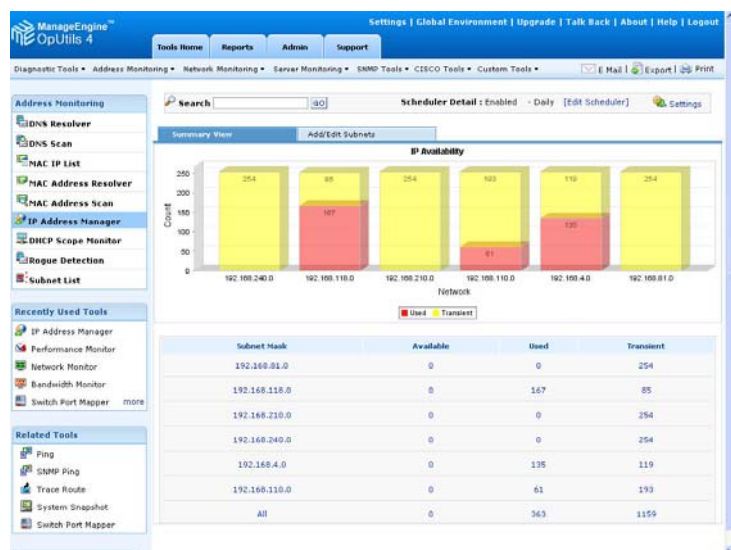
- Monitor an SNMP-enabled IP node in a network
- Powerful SNMP Tools like MIB Browser and Trap viewer
- Receives and displays SNMP traps
- Comprehensive MIB database
- Plots real-time SNMP graph
- Retrieves and displays information about MIB modules and MIB nodes
- Tool to identify the SNMP community strings of the devices in the network.

CISCO Tools

- Tool to manage the cisco configuration files: Backup, Retrieve, Compare, and Upload
- Tools for monitoring cisco routers
- Lists the IOS, chassis, and flash details of a cisco router
- Monitor the CPU and memory utilization
- Monitor the interface statistics like performance, utilization, runs, giants, etc.
- View the access control list of the cisco devices.

Custom SNMP Dashboard

While OpUtils provides a set of widely used tools to monitor the network, it also lets the administrators to create their own tools to suit their need. It allows creation of custom SNMP tools to monitor their SNMP devices. The Custom tool can be created for viewing either Graphical or tabular data. The tool thus created can be used to monitor any of the network devices. A single tool can be used to monitor the MIB node values in multiple devices.



System Requirements: Pentium III 733 MHz, 256 MB RAM, 100 MB Hard Disk Space. OS Supported: Windows NT, 2000, XP, Red Hat Linux 7.x.